



MINISTRY OF TRANSPORT
MALAYSIA



AGRICULTURAL UAS OPERATIONS

THIS CIVIL AVIATION DIRECTIVE (CAD) IS APPLICABLE TO AGRICULTURAL OPERATIONS UTILISING AN UNMANNED AIRCRAFT SYSTEM (UAS) FOR THE PURPOSE OF DISPENSING ANY AGRICULTURAL PAYLOAD OR PESTICIDES; OR OTHER THAN DISPENSING OPERATIONS (E.G. SURVEILLANCE). THIS CAD PRESCRIBES THE DIRECTIVES IN RELATION TO:

1. Agricultural UAS Operations within Malaysia; and
2. The issue of commercial & private agricultural UAS Aerial Work Certificate for those operations.



PRIVATE

OPERATIONAL REQUIREMENTS:

- All operations must be conducted below 400 feet Above Ground Level (AGL) and at a distance of not closer than 50 meters to persons, vessels, vehicles and structures uninvolved to the operations.
- All operations must be conducted beyond 9.26km from an aerodrome and only in Class G airspace.
- All operations shall be conducted in Visual Line of Sight (VLOS) or Extended Visual Line of Sight (EVLOS).

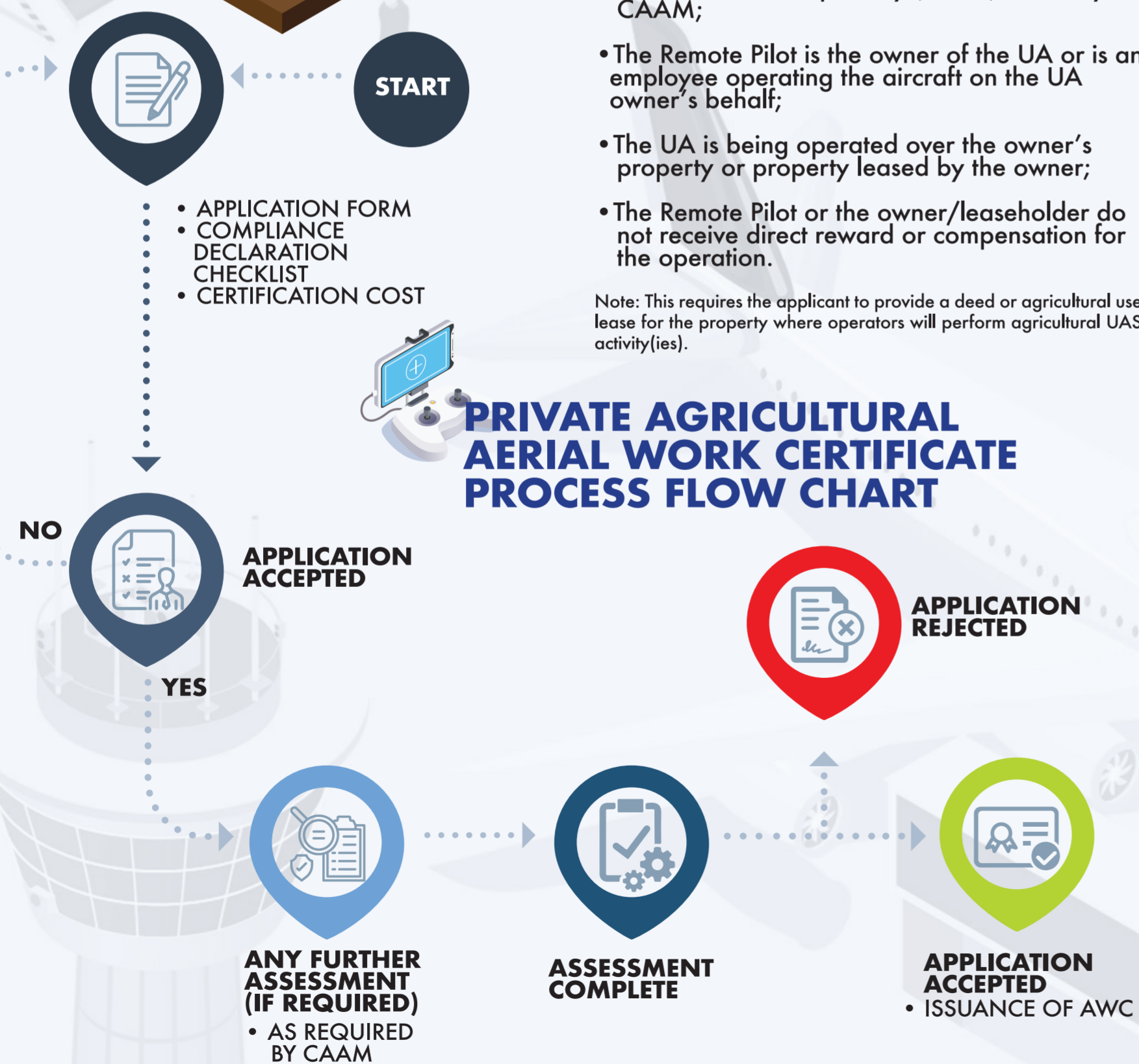


APPLICABILITY:

- The Remote Pilot must hold a valid Remote Pilot Certificate of Competency (RCoC) issued by CAAM;
- The Remote Pilot is the owner of the UA or is an employee operating the aircraft on the UA owner's behalf;
- The UA is being operated over the owner's property or property leased by the owner;
- The Remote Pilot or the owner/leaseholder do not receive direct reward or compensation for the operation.

Note: This requires the applicant to provide a deed or agricultural use lease for the property where operators will perform agricultural UAS activity(ies).

PRIVATE AGRICULTURAL AERIAL WORK CERTIFICATE PROCESS FLOW CHART



COMMERCIAL

PRE APPLICATION MEETING

- SUBMISSION OF POPS

START

- POPS ACCEPTED

FORMAL APPLICATION MEETING

- APPLICATION FORM
- CERTIFICATION COST
- SCHEDULE OF EVENTS

CLEAR FOR NEXT PHASE

DOCUMENT EVALUATION PHASE

- COMPLIANCE CHECKLIST
- SUBMISSION OF OTHER AGENCIES APPROVAL

DEMONSTRATION AND INSPECTION PHASE

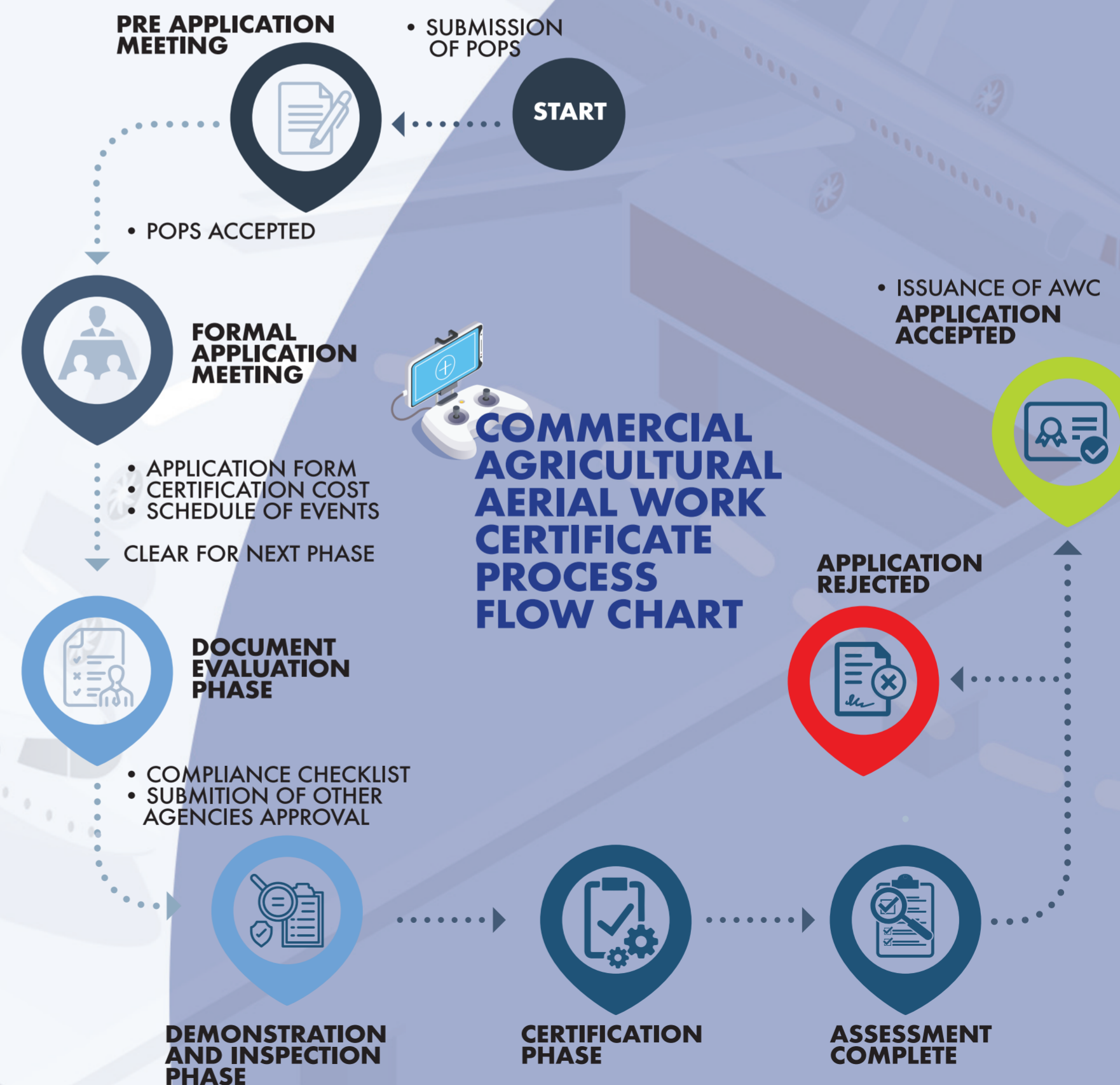
CERTIFICATION PHASE

ASSESSMENT COMPLETE

- ISSUANCE OF AWC APPLICATION ACCEPTED

APPLICATION REJECTED

COMMERCIAL AGRICULTURAL AERIAL WORK CERTIFICATE PROCESS FLOW CHART



SPECIAL UAS PROJECT



MINISTRY OF TRANSPORT
MALAYSIA



THE CIVIL AVIATION DIRECTIVE IS APPLICABLE TO SPECIAL UAS PROJECT THAT INVOLVES:

- Carriage of Dangerous Goods;
- BVLOS (Beyond Visual Line of Sight);
- Research and Development;
- Any other operations that require an additional operational support activity from the CAAM due to the additional risks it involves.

THIS CAD IS NOT APPLICABLE IF THE OPERATIONS ARE CONDUCTED IN ANY OF THE FOLLOWING CONDITIONS:

- Has a characteristic dimension of 3m or more and is designed to be operated over assemblies of people;
- Transportation of people;
- Transportation of dangerous goods and requires a high level of robustness to mitigate the risks for third parties in case of accident.

HOW? SORA

PDRA

PRE-DEFINED RISK ASSESSMENT

Flights for Research and Development Testing of UAS

WHAT?

This PDRA is designed to enable short term initial research and development flights to be conducted, within a sterile area away from people and property. It allows a UAS manufacturer/developer to conduct initial 'proof of concept' flight tests without the need to produce a full risk assessment for a product that may not prove to be feasible for further development.

WHEN?

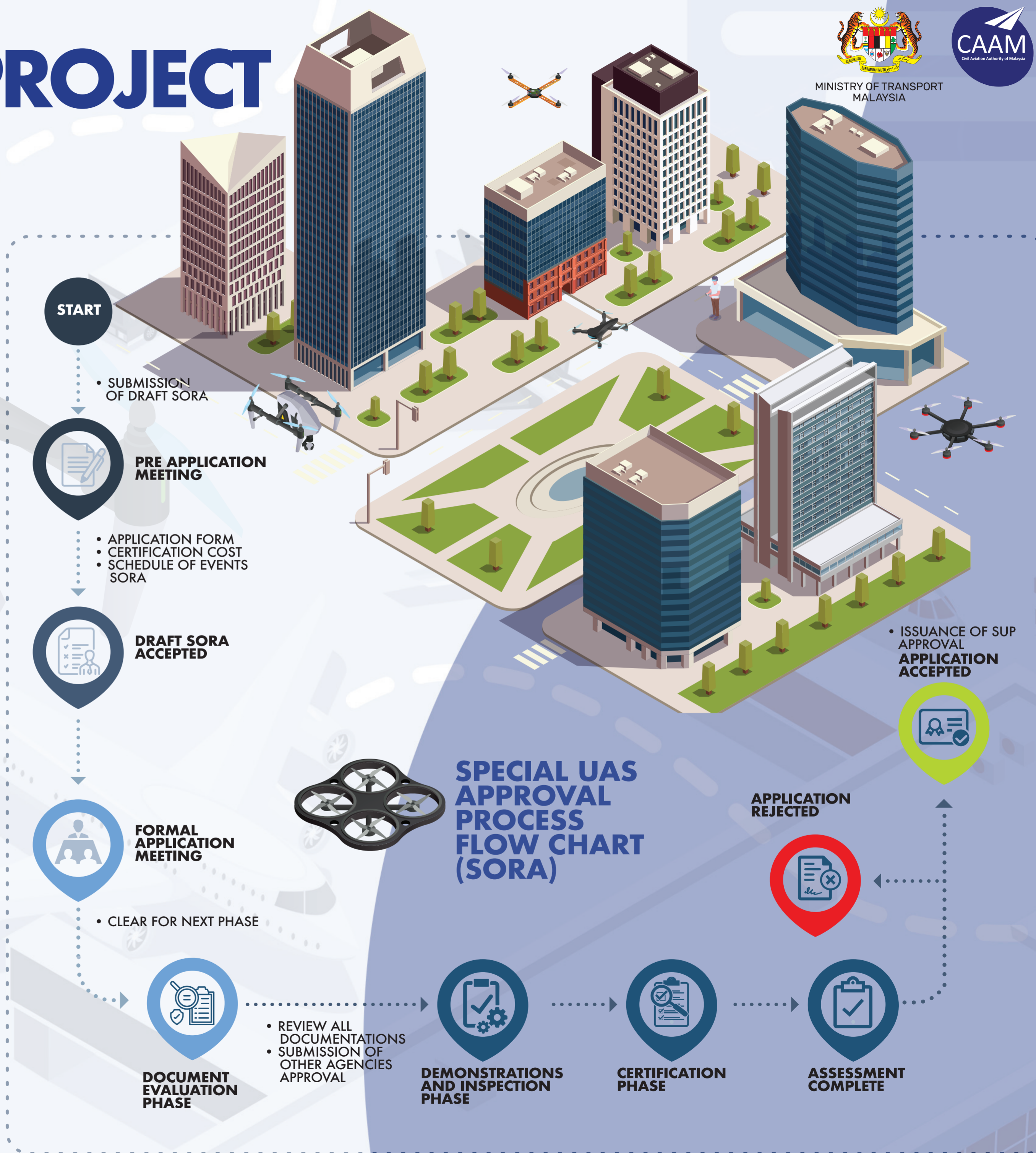
- Flights must be conducted within a sterile area free of any uninvolved persons
- Maximum height not to exceed 400 feet above the surface of the earth
- Flights must be conducted at least 150 metres horizontally from a Designated Area i.e. Residential, Commercial, Industrial or Residential Area
- Daytime operations ONLY and within VLOS

WITH?

Insurance coverage
UAS Traffic Management System

HOW?

- Operations Manual
- SMS and ERP Manual
- Remote Pilot with valid RCoC



REMOTE PILOT TRAINING ORGANISATION

THIS CAD IS APPLICABLE TO ALL REMOTE PILOT TRAINING ORGANISATION WHICH INTENDS TO BECOME AN APPROVED TRAINING ORGANISATION BY CAAM.

REMOTE PILOT CERTIFICATE OF COMPETENCY (RCOC) SCHEME SATISFIES THE REQUIREMENTS FOR:

AGRICULTURAL OPERATIONS



- RCoC-B is acceptable for all VLOS operations for 'other than dispensation' activities. (e.g. surveillance, mapping, etc)
- If the RCoC-B is paired with Module 2 (AGR), the Certificate holder may operate operations which include dispensation operations and fulfils requirements.
- If the RCoC-B is paired with Module 1 (EVLOS), the Certificate holder may operate operations that involves Extended Visual Line of Sight [EVLOS] which include other than dispensing operations.

SPECIAL UAS PROJECT



- If the RCoC-B is paired with Module 1 (EVLOS), the Certificate holder may operate operations that involves Extended VLOS [EVLOS].
- If required by the SORA, the RCoC-B shall be paired with additional modules proposed by the RPTO or UAS Operator which is acceptable to CAAM.

SPECIFIC CATEGORY



- RCoC-B is acceptable for all VLOS operations conducted under a published STS or PDRA.
- If the RCoC-B is paired with Module 1 (EVLOS), the Certificate holder may operate operations that involves Extended VLOS [EVLOS].
- If required by the SORA, the RCoC-B shall be paired with additional modules proposed by the RPTO or UAS Operator which is acceptable to CAAM.

Note: This is only applicable once the CAD 6011 becomes effective.

