

TEL : 6-03-8529 1318
 FAX : 6-03-8529 1310
 Email : ais@caam.gov.my
 Web : aip.caam.gov.my

MALAYSIA
 CIVIL AVIATION AUTHORITY OF MALAYSIA
 AERONAUTICAL INFORMATION SERVICES
 LEVEL 2, WEST WING TERMINAL NORTH
 JALAN CTA 3
 KUALA LUMPUR INTERNATIONAL AIRPORT
 64000 KLIA, SEPANG
 SELANGOR DARUL EHSAN

**AIRAC AIP
 13/2024**

Effective from 18 APR 2024
 PERM
 Published on 08 FEB 2024

**TAWAU AIRPORT (WBKW)
 REFURBISHMENT OF INSTRUMENT LANDING SYSTEM (ILS)
 RADIO NAVIGATION AID AND REVISED INSTRUMENT APPROACH PROCEDURES**

1 INTRODUCTION

- 1.1 A new Instrument Landing System (ILS) radio navigation aid has been installed at Tawau Airport, Sabah and the Localizer (LOC) and the GP/DME equipment are located at the same location within the airfield. Along with this refurbishment, the ILS and LOC approach procedures for Tawau Airport were reviewed to the latest obstacle data.
- 1.2 This AIP Supplement is to notify the aviation industry the introduction of new VOR/DME Arrival and revised ILS and LOC Approach Procedures for Runway 24 Tawau Airport.

2 LOCATION AND DETAILS OF NEW RADIO NAVIGATION AID

- 2.1 The location and details of the ILS/LOC and GP/DME are as follows:

| Type of aid, CAT of ILS | ID | Frequency | Hours of operation | Position of transmitting antenna coordinates | Elevation of DME antenna | Remarks |
|-------------------------|------|---------------------|--------------------|--|--------------------------|---|
| 1 | 2 | 3 | 4 | 5 | 6 | 7 |
| ILS/LOC | ITWU | 111.3 MHz | H24 | 041817.12N 1180628.79E | - | LOC - 25 Watt |
| GP/DME | ITWU | 332.3 MHz CH 50X | | 041902.07N 1180749.92E | 87 FT (26.5 M) | RDH: 50 FT GP - 5 Watt DME - 100 Watt |

3 REVISED INSTRUMENT FLIGHT PROCEDURES

- 3.1 The new Standard Instrument Arrival Procedures (STAR) charts are as follows:

APPENDIX A-1 STANDARD ARRIVAL CHART - ICAO - RWY 24 VOR/DME ARC AGIGI 1H, ANGUR 1H, BILUK 1H, BAXAL 1H

- 3.2 The new revised Instrument Approach Procedures charts are as follows:

APPENDIX B-1 INSTRUMENT APPROACH CHART - ICAO - RWY 24 ILS OR LOC

- 3.3 The following charts pertaining to Tawau Airport will be superseded:

AD 2-WBKW-8-5 INSTRUMENT APPROACH CHART - ICAO - RWY 24 ILS OR LOC

4 IMPLEMENTATION DATE

4.1 This AIP Supplement and relevant charts will become effective at 0001UTC on **18th April 2024**.

5 CANCELLATION

5.1 If there are no major changes required, this AIP Supplement will remain until the information is published in AIP Malaysia.

- END -

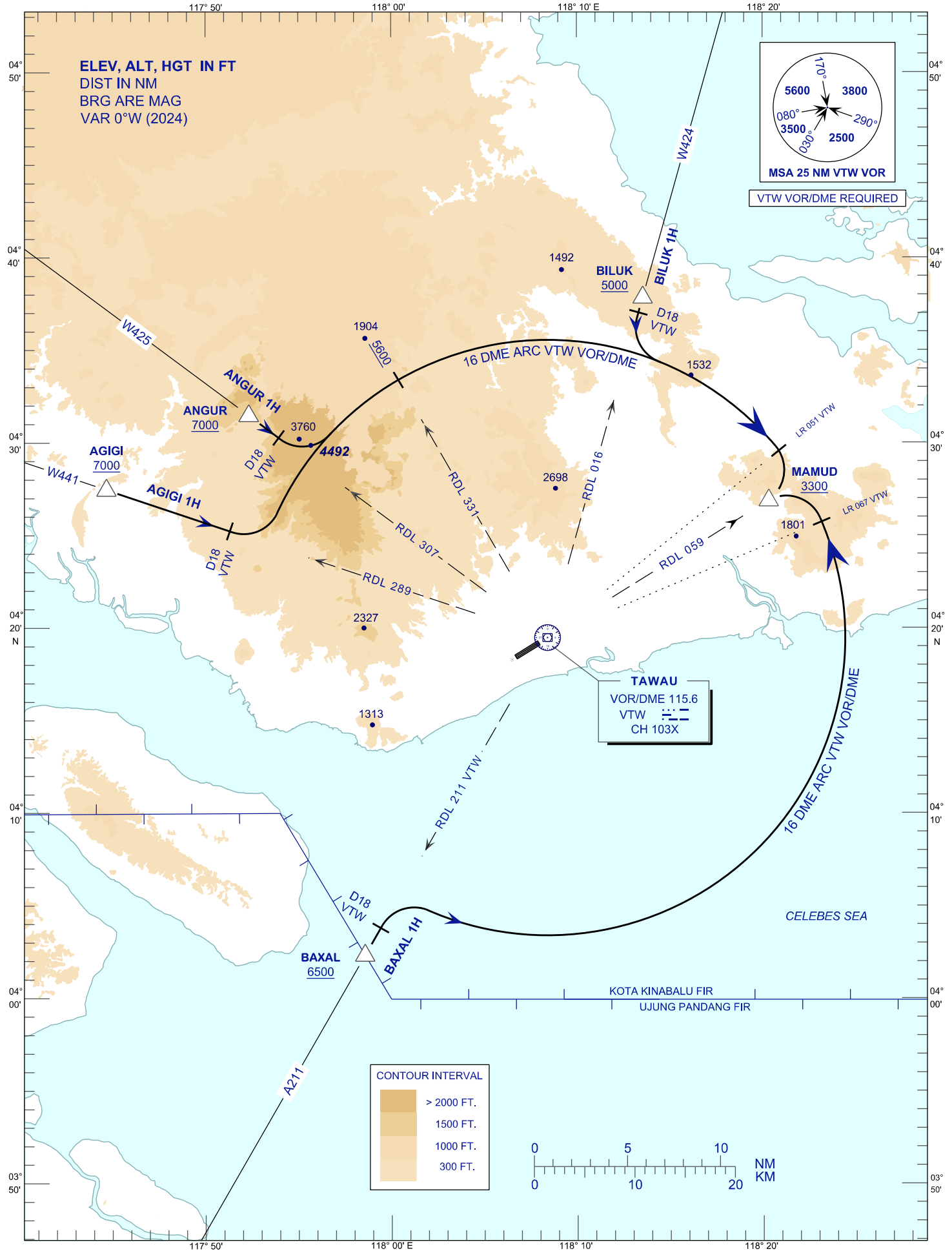
**STANDARD ARRIVAL CHART
INSTRUMENT (STAR) - ICAO**

TRANSITION ALTITUDE
11000FT

| | |
|------|--------|
| APP | 123.55 |
| TWR | 122.50 |
| SMC | 121.90 |
| ATIS | 126.25 |

**TAWAU/TAWAU (WBKW)
VOR/DME ARC RWY24**

AGIGI 1H ANGUR 1H
BILUK 1H BAXAL 1H



STANDARD ARRIVAL CHART
INSTRUMENT (STAR) - ICAO

TRANSITION ALTITUDE
11000FT

TAWAU/TAWAU (WBKW)
VOR/DME ARC RWY24

AGIGI 1H ANGUR 1H
BILUK 1H BAXAL 1H

ARRIVAL DESCRIPTION

| STAR DESIGNATOR | STAR DESCRIPTION |
|------------------------------------|---|
| AGIGI ONE HOTEL ARRIVAL (AGIGI 1H) | ARRIVAL VIA ATS ROUTE W441 TO AGIGI, THEN TRACK INBOUND ON TR 109° (RDL 289 VTW VOR). AT 18.0 DME VTW VOR, TURN LEFT TO JOIN 16.0 DME ARC VTW VOR. AFTER CROSS RDL 051 VTW VOR, THEN TURN RIGHT FOR ILS OR LOC APPROACH RWY 24. |
| ANGUR ONE HOTEL ARRIVAL (ANGUR 1H) | ARRIVAL VIA ATS ROUTE W425 TO ANGUR, THEN TRACK INBOUND ON TR 127° (RDL 307 VTW VOR). AT 18.0 DME VTW VOR, TURN LEFT TO JOIN 16.0 DME ARC VTW VOR. AFTER CROSS RDL 051 VTW VOR, THEN TURN RIGHT FOR ILS OR LOC APPROACH RWY 24. |
| BILUK ONE HOTEL ARRIVAL (BILUK 1H) | ARRIVAL VIA ATS ROUTE W424 TO BILUK, THEN TRACK INBOUND ON TR 196° (RDL 016 VTW VOR). AT 18.0 DME VTW VOR, TURN LEFT TO JOIN 16.0 DME ARC VTW VOR. AFTER CROSS RDL 051 VTW VOR, THEN TURN RIGHT FOR ILS OR LOC APPROACH RWY 24. |
| BAXAL ONE HOTEL ARRIVAL (BAXAL 1H) | ARRIVAL VIA ATS ROUTE A211 TO BAXAL, THEN TRACK INBOUND ON TR 031° (RDL 211 VTW VOR). AT 18.0 DME VTW VOR, TURN RIGHT TO JOIN 16.0 DME ARC VTW VOR. AFTER CROSS RDL 067 VTW VOR, THEN TURN LEFT FOR ILS OR LOC APPROACH RWY 24. |

AERONAUTICAL DATA TABULATION

| WAYPOINT / NAVAID/ FIX | NAVAID FREQUENCY / CROSS REFERENCE FROM NAVAID | COORDINATE (WGS84) |
|------------------------|--|---------------------------------------|
| VTW VOR/DME | 115.6 MHZ / CH 103X | 04° 19' 28.30" N 118° 08' 23.70" E |
| AGIGI | RDL 289 VTW / 25.0 DME VTW | 04° 27' 27.61" N 117° 44' 39.91" E |
| ANGUR | RDL 307 VTW / 20.0 DME VTW | 04° 31' 28.20" N 117° 52' 19.60" E |
| BAXAL | RDL 211 VTW / 19.7 DME VTW | 04° 02' 20.00" N 117° 58' 34.00" E |
| BILUK | RDL 016 VTW / 19.0 DME VTW | 04° 37' 50.69" N 118° 13' 32.42" E |
| MAMUD | RDL 059 VTW / 14.0 DME VTW | 04° 26' 53.21" N 118° 20' 18.46" E |

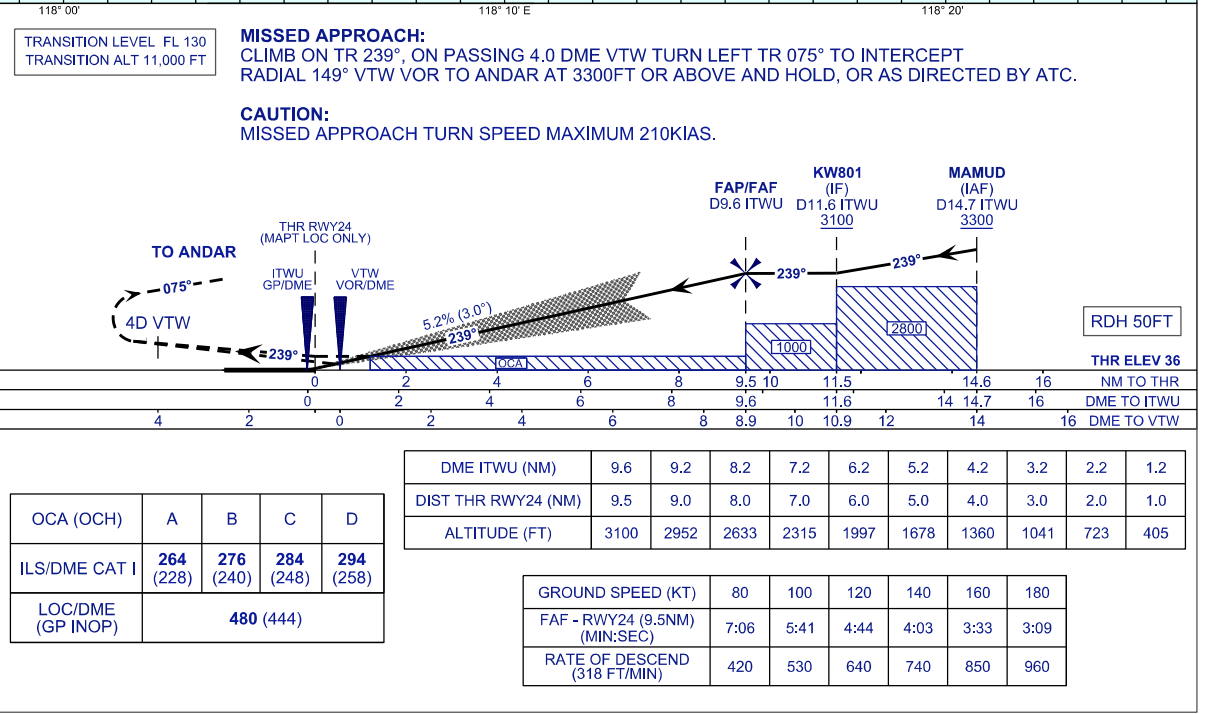
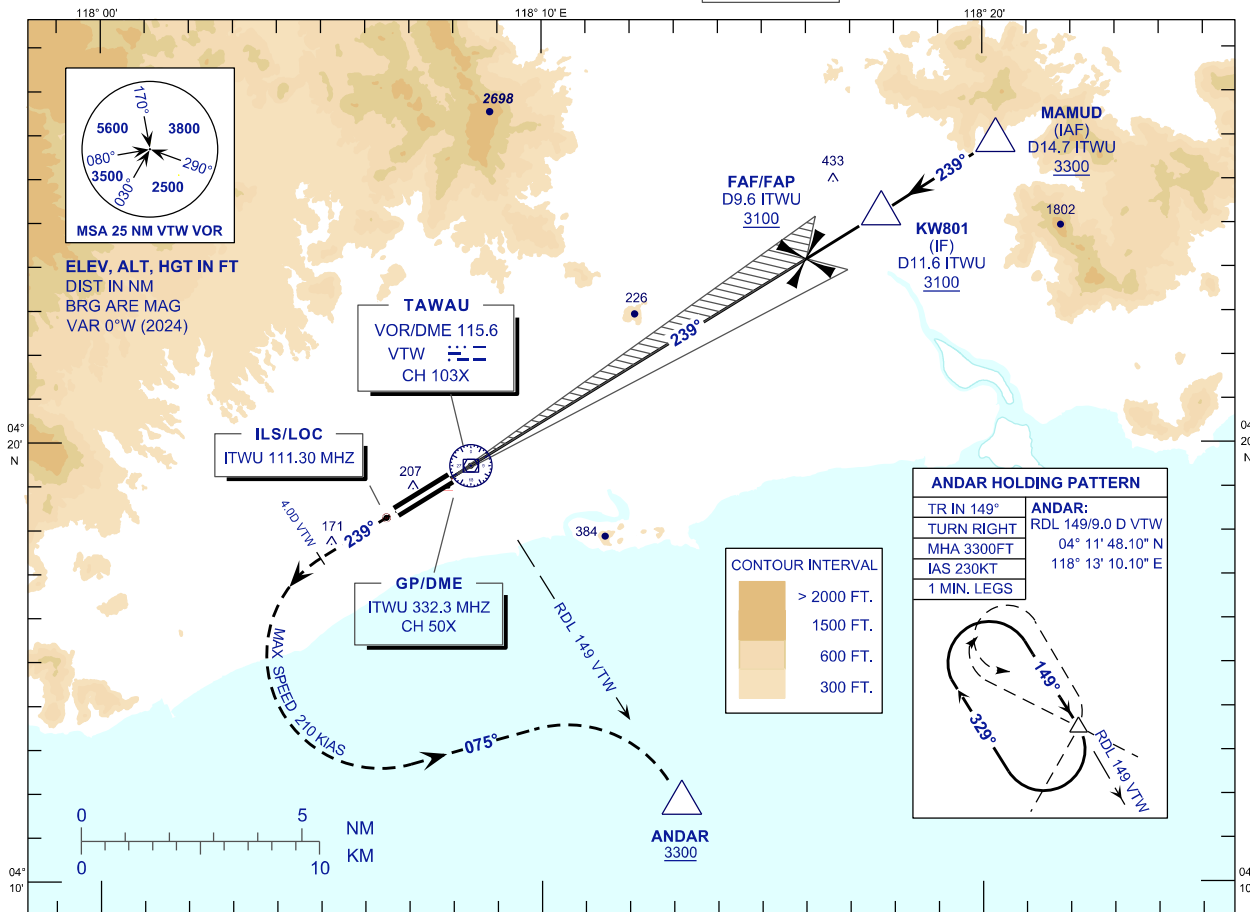
NEW PROCEDURE/CHART

**INSTRUMENT
APPROACH
CHART - ICAO**

AERODROME ELEV 56FT
HEIGHT RELATED TO
THR RWY 24 - ELEV 36FT

APP 123.55
TWR 122.50
SMC 121.90
ATIS 126.25

**TAWAU/TAWAU (WBKW)
ILS OR LOC RWY 24**



NEW PROCEDURE/CHART

**INSTRUMENT
APPROACH
CHART - ICAO**

AERODROME ELEV 56FT
HEIGHT RELATED TO
THR RWY 24 - ELEV 36FT

**TAWAU/TAWAU (WBKW)
ILS OR LOC RWY 24**

AERONAUTICAL DATA TABULATION

| WAYPOINT / NAVAID/ FIX | NAVAID FREQUENCY / CROSS REFERENCE FROM NAVAID | COORDINATE (WGS84) |
|---------------------------|---|------------------------------------|
| MAMUD (IAF) | RDL 059 VTW / 14.7 DME ITWU | 04° 26' 53.21" N 118° 20' 18.46" E |
| KW801 (IF) | RDL 059 VTW / 11.6 DME ITWU | 04° 25' 13.26" N 118° 17' 42.67" E |
| FAF/FAP | RDL 059 VTW / 9.6 DME ITWU | 04° 24' 10.15" N 118° 16' 00.30" E |
| MAPt (LOC ONLY) | THR RWY24 | 04° 19' 11.11" N 118° 07' 56.07" E |
| ITWU GP/DME | 332.3 MHZ / CH 50X | 04° 19' 02.07" N 118° 07' 49.92" E |
| ITWU LOC | 111.30 MHZ | 04° 18' 17.12" N 118° 06' 28.79" E |
| ANDAR | RDL 149 VTW / 9.0 DME VTW | 04° 11' 48.10" N 118° 13' 10.10" E |
| VTW VOR/DME | 115.6 MHZ / CH 103X | 04° 19' 28.30" N 118° 08' 23.70" E |

NEW PROCEDURE/CHART